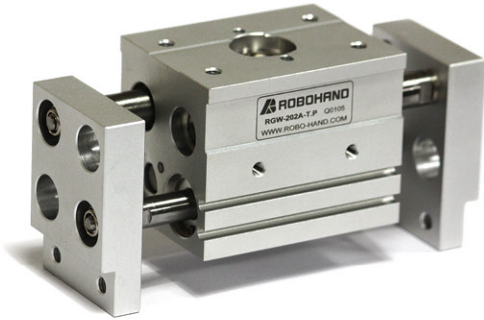


RGW

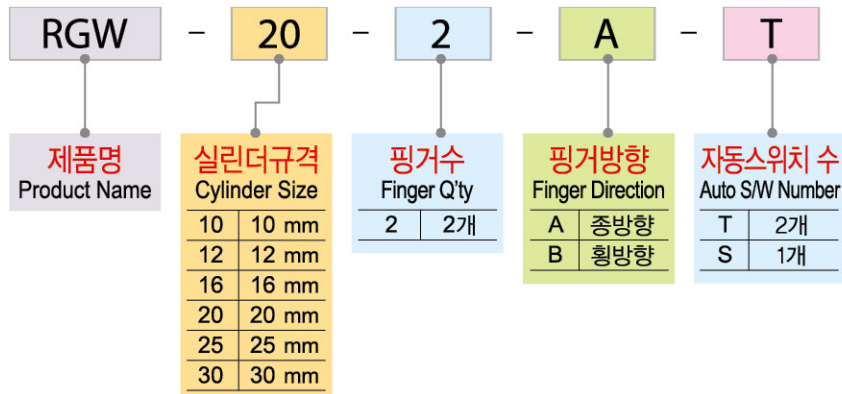
AIR CHUCK

FEATURES OF PRODUCT



- 랙 & 피니언에 의한 동기동작형 구조로 안정된 피지력 유지
- 몸체 중심의 횡형계폐로 이형 제품 파지 용이
- 1대로 다양한 워크 크기에 대응
- 초소형 오토스위치 부착 가능

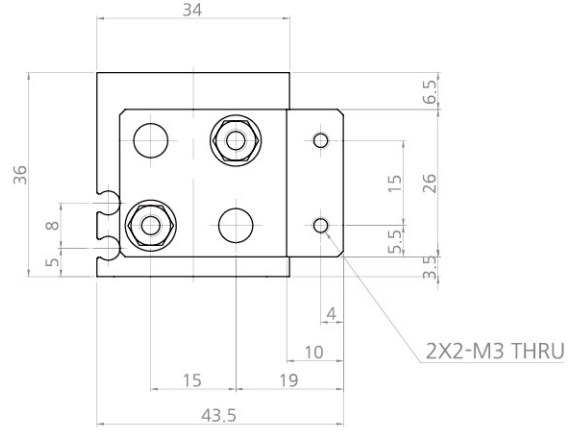
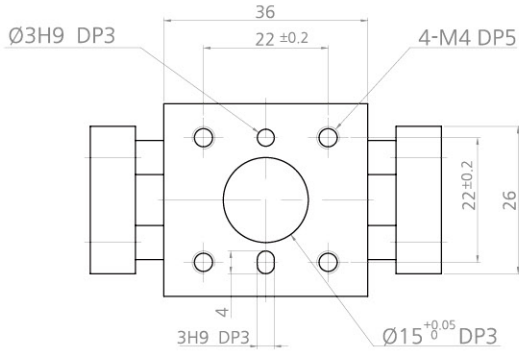
ORDERING CODE



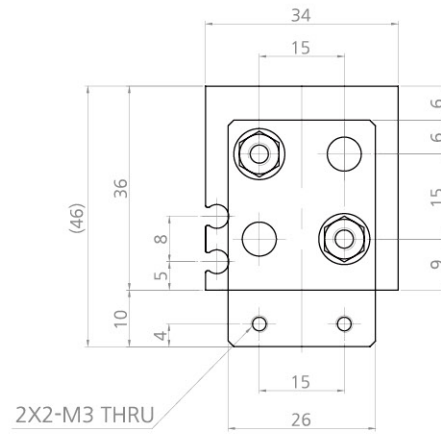
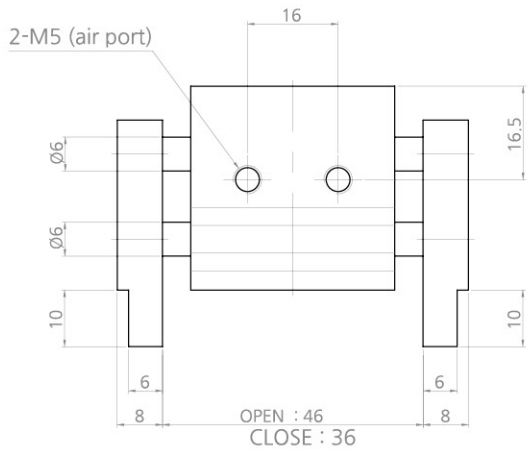
PRODUCT CONTENTS

모델명	RGW-102	RGW-122	RGW-162	RGW-202	RGW-252	RGW-302
실린더경(mm)	10	12	16	20	25	30
개폐행정(mm)	담힘폭	36	44	54	76	110
	열림폭	46	64	84	116	170
	STROKE	10	20	30	40	60
이론파지력 (N)	담힘	2.9	5.1	9.1	14.2	30.8
	열림					
배관 접속구	M5					
본체 중량(kgf)	0.15	0.28	0.52	1.10	1.8	3
최대 치구 길이 L(mm)	45	60	75	90	130	170
사용 유체	청정공기					
사용압력(kgf/cm ²)	3~7					
사용윤활	무급유(급유시 터빈오일 1종 ISOVG 32)					
사용 온도(°C)	5~60					
반복정밀도(mm)	±0.05					
최고 사용 횟수(C.P.M)	60					

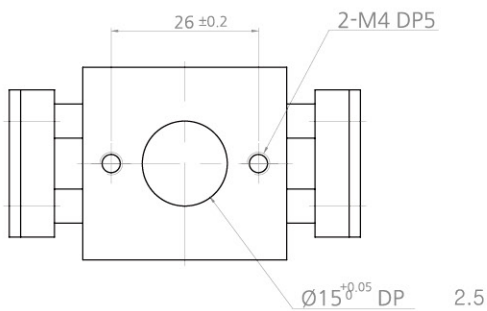
TECHNICAL DRAWING – RGW-102

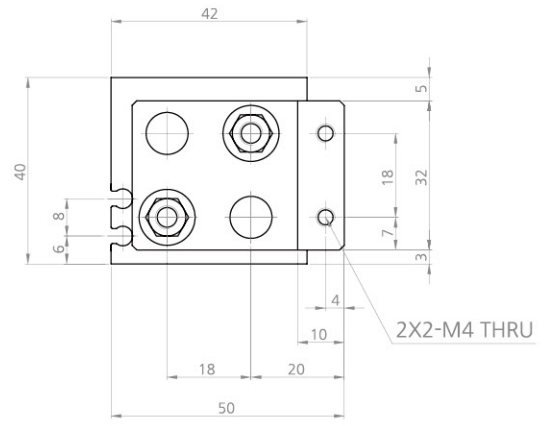
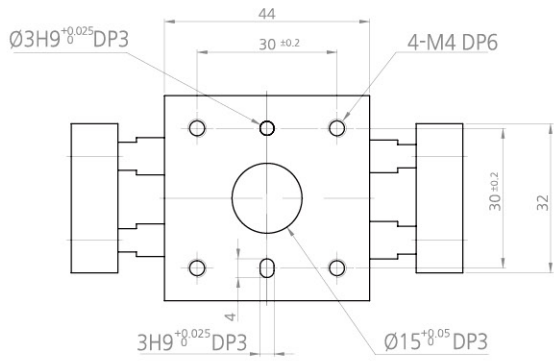


(B) TYPE

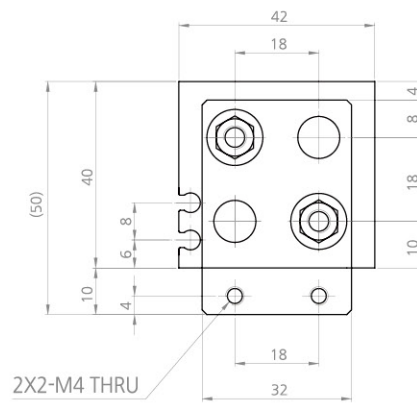
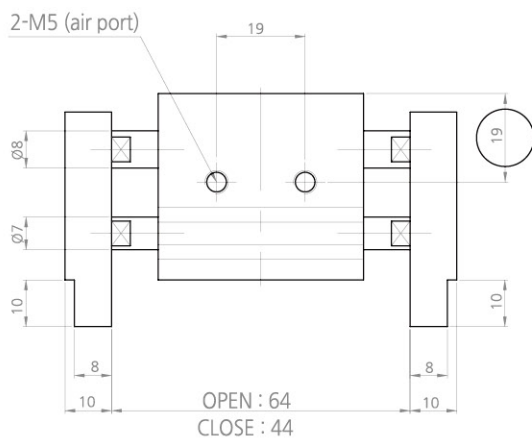


(A) TYPE

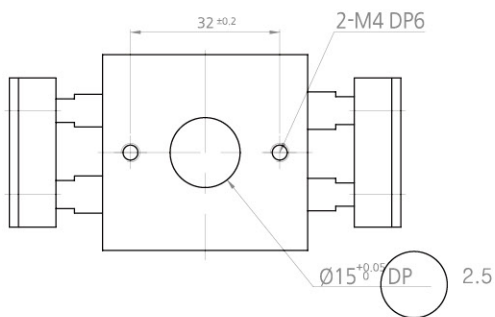




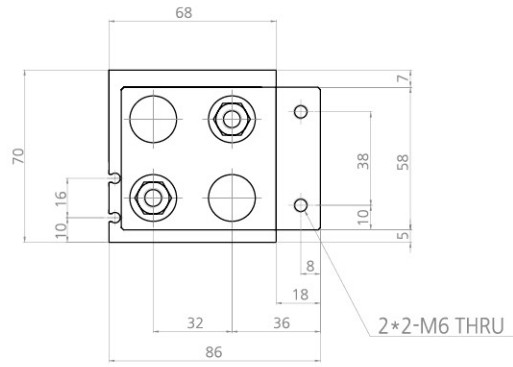
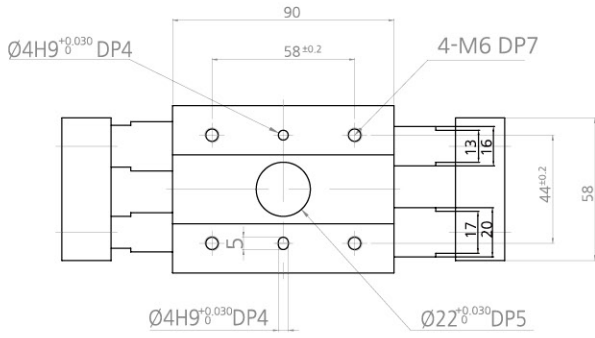
(B) TYPE



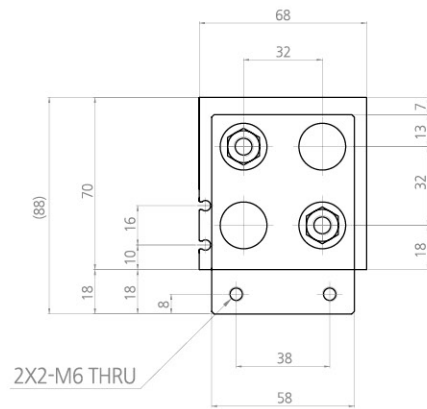
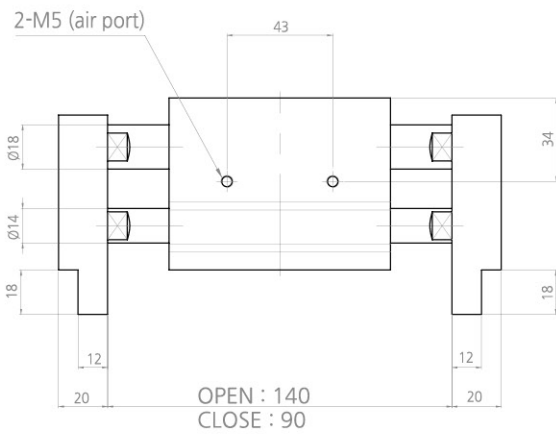
(A) TYPE



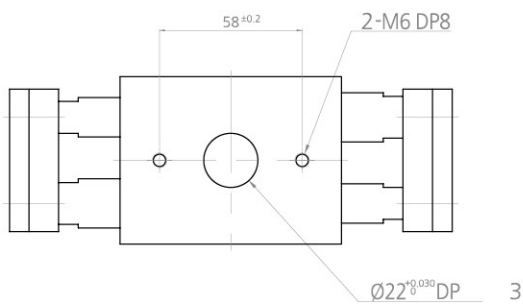
TECHNICAL DRAWING – RGW-252



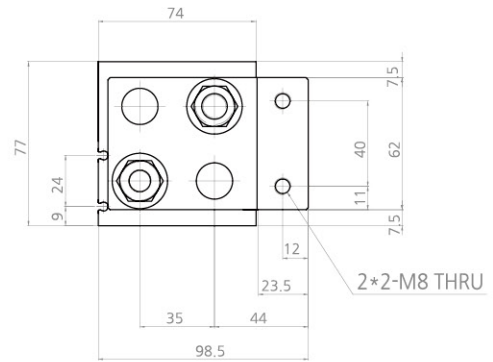
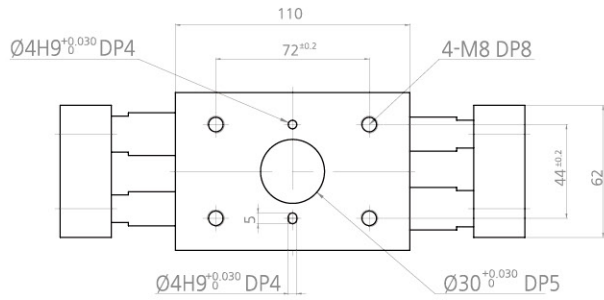
(B) TYPE



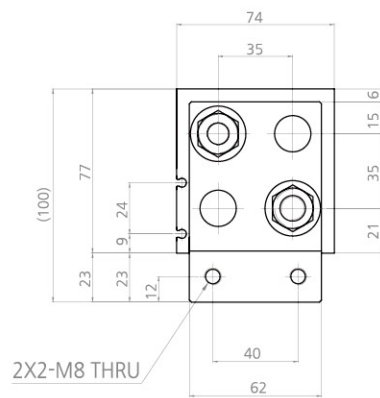
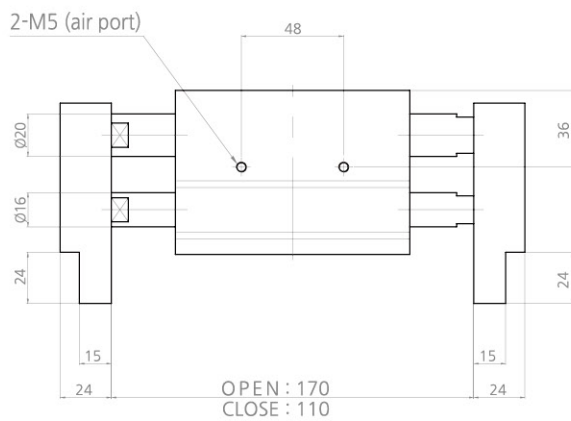
(A) TYPE



3



(B) TYPE



(A) TYPE

