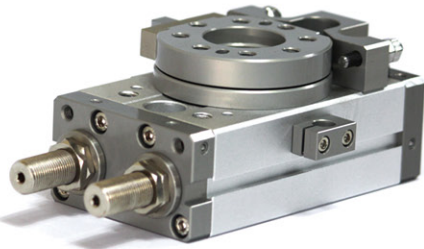


# RRT-ST

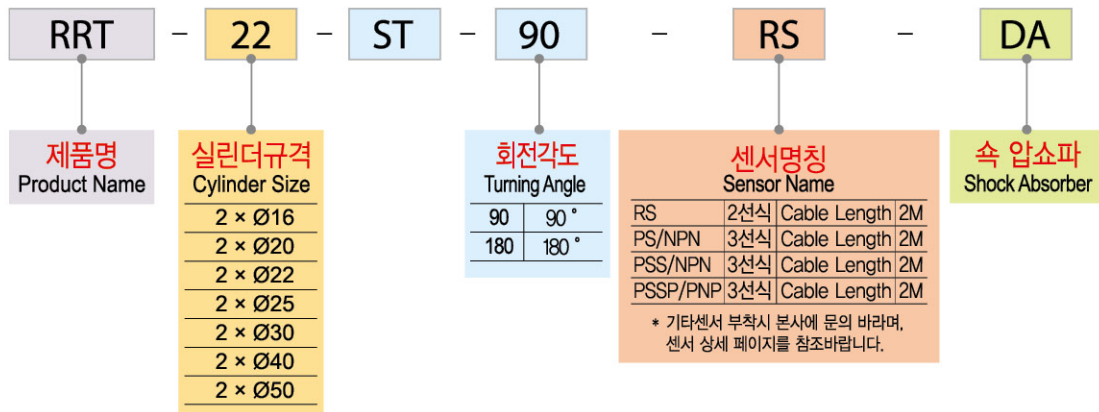
## ROTARY CYLINDERS

### FEATURES OF PRODUCT



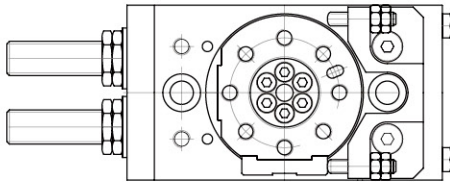
- 랙 & 피니언에 의한 더블 피스톤 방식의 로타리 실린더
- 속 압쇼바 부착 가능
- 초소형 오토 스위치 부착 가능
- 원형테이블을 활용, 다양한 Application

### ORDERING CODE

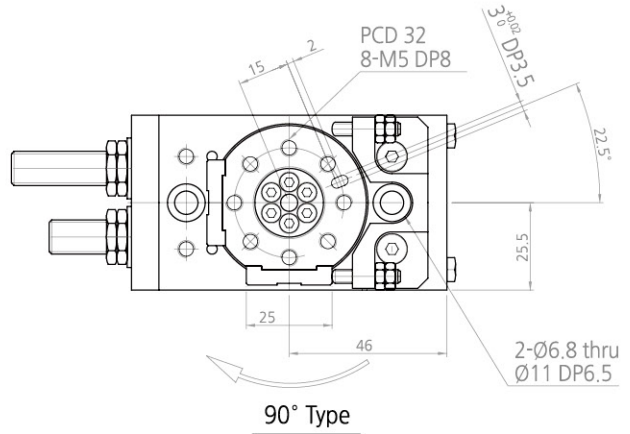


### PRODUCT CONTENTS

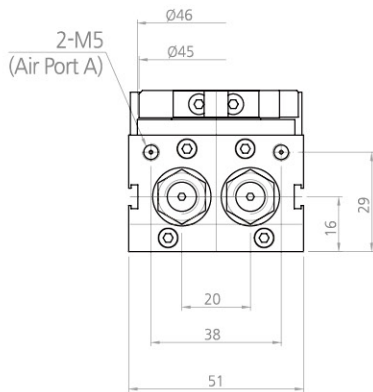
모델명	RRT-16ST	RRT-20ST	RRT-22ST	RRT-25ST	RRT-30ST	RRT-40ST	RRT-50ST	
실린더경 (mm)	2×Ø16	2×Ø20	2×Ø22	2×Ø25	2×Ø30	2×Ø40	2×Ø50	
회전각도 (°)	0~190°							
쿠션	조정볼트 부착		우레탄					
	속 압쇼바 부착		속 압쇼바					
이론 토크 (kgf.cm)	2 * P	4 * P	4.8 * P	8.2 * P	14.8 * P	31 * P	74 * P	
허용 에너지 (kgf.cm)	조정볼트 부착		0.08	0.27	0.49	0.78	2.33	5.7
	속 압쇼바 부착		0.40	1.2	1.041	2.639	9.68	14.08
배관 접속구	M5	M5	PT 1/8	~	~	PT 1/8		
본체 중량 (kg)	0.56	1	1.27	2.02	3.10	6.8	12	
최대 레이디얼 하중(kgf)	7.9	15	20	32	34	40	55.4	
최대 트러스트 하중(kgf)	7.9	13.9	37	46	49	72	102.9	
회전 시간90° 기준 (sec)	조정볼트 부착		0.2~1.0		0.2~1.5	0.2~2.0		
	속 압쇼바 부착		0.2~0.7		0.2~1.0			
사용유체	청정공기							
사용압력 (kgf/cm²)	3~7							
사용 윤활	무급유(급유시 터빈오일 1종 ISOVG 32)							
사용 온도(°C)	5~60							
작동 방식	복동							
반복 위치 정도(mm)	초기치		±0.05					
	100만회 작동후		±0.07					



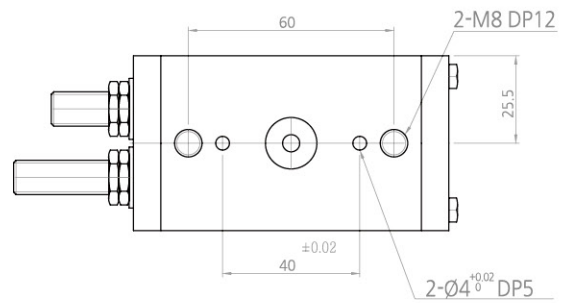
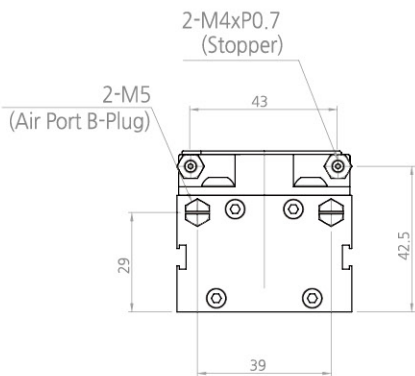
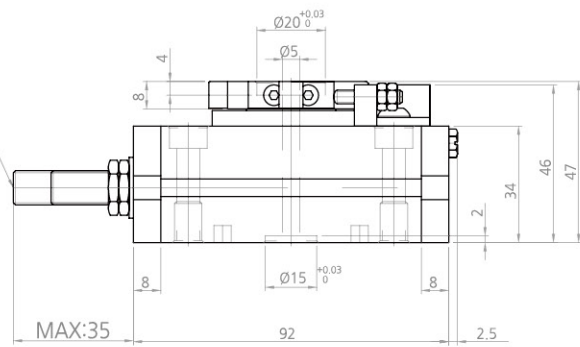
180° Type

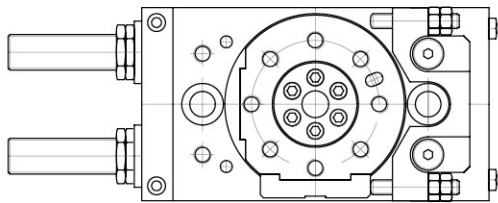


90° Type

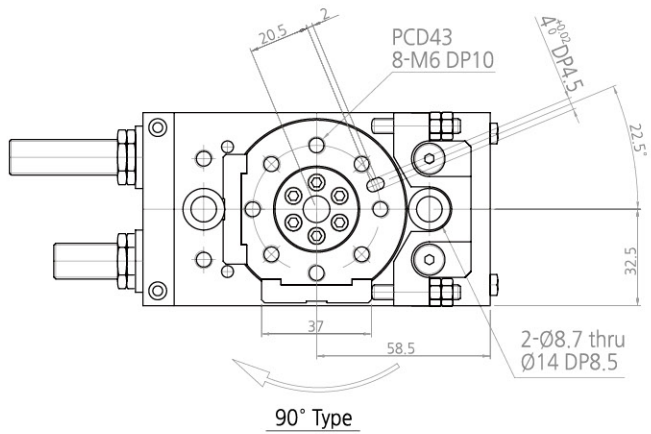


2-M10xP1  
(Adjust Screw)

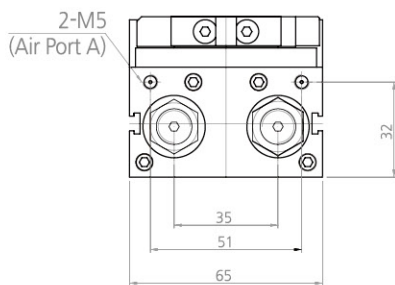




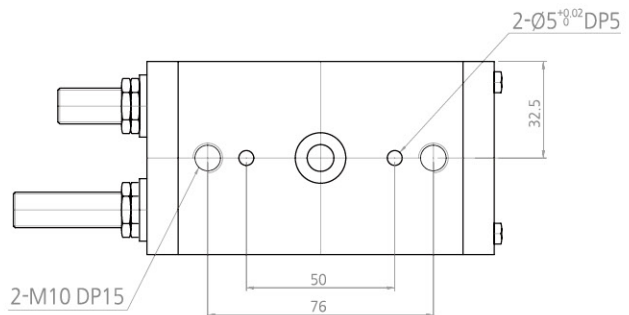
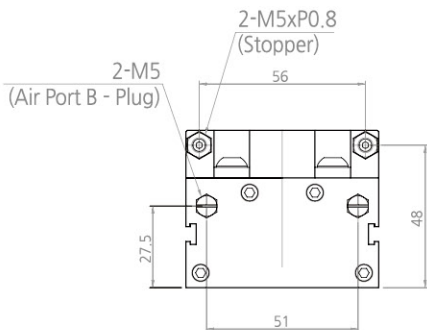
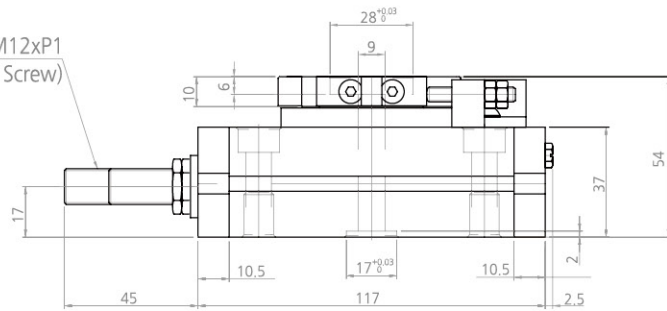
180° Type

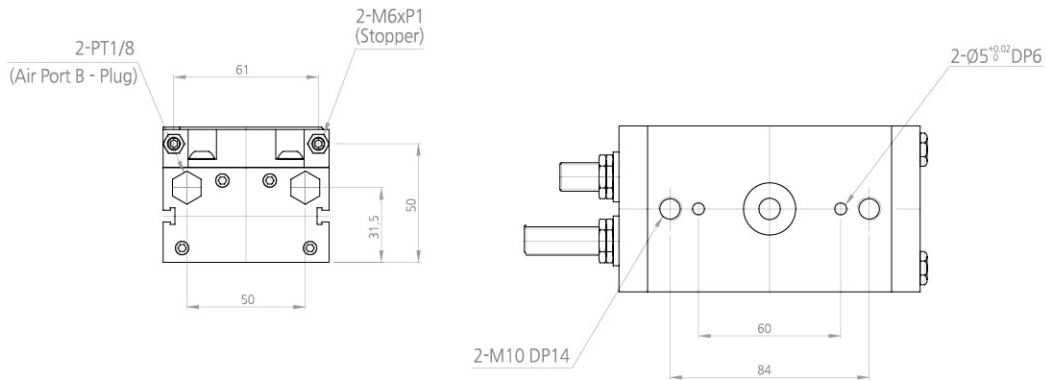
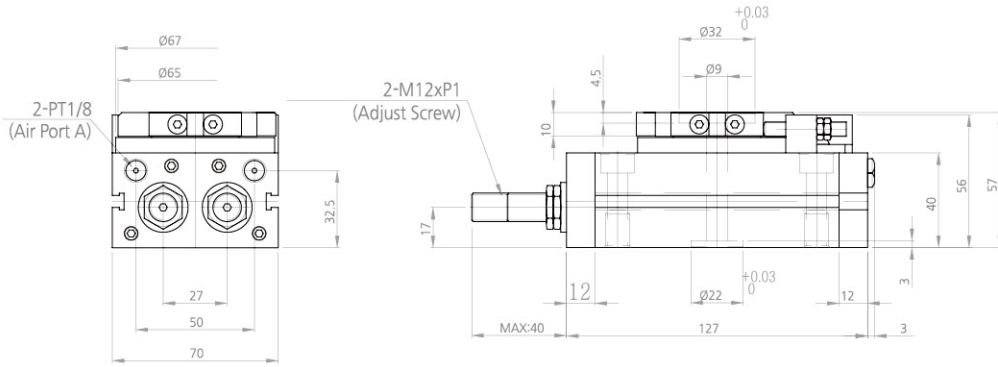
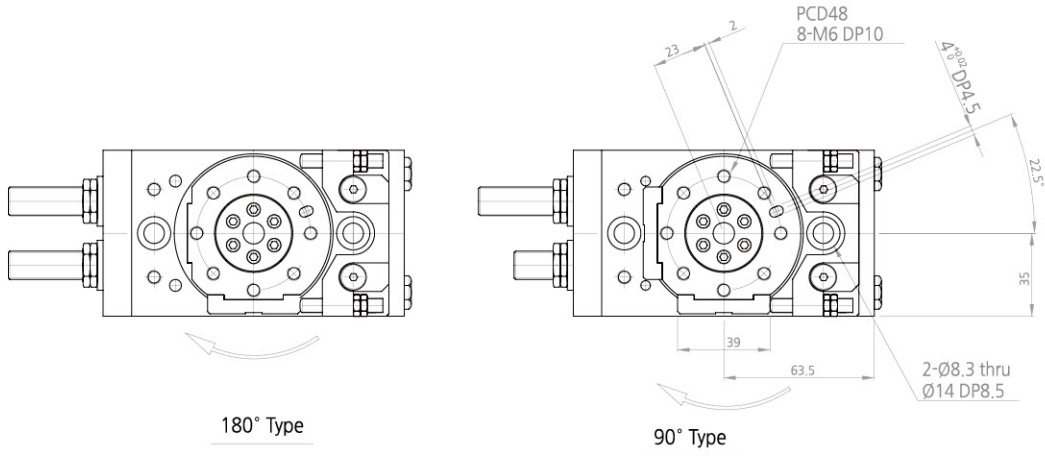


90° Type

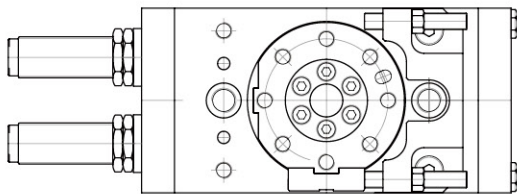


2-M12xP1  
(Adjust Screw)

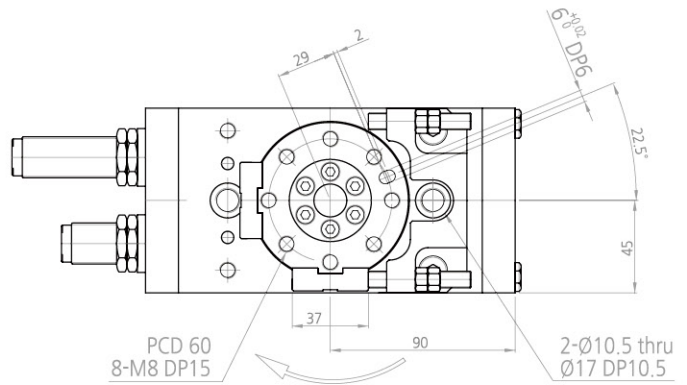




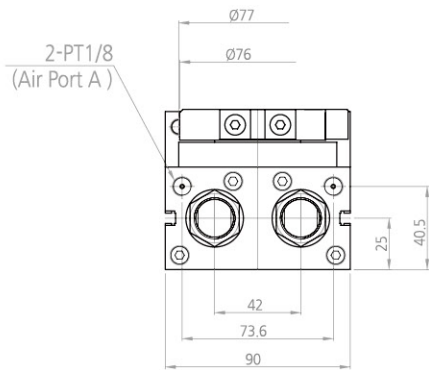




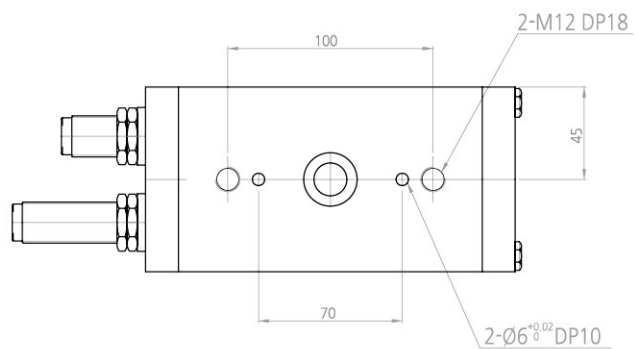
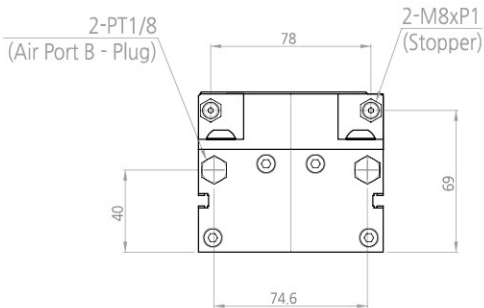
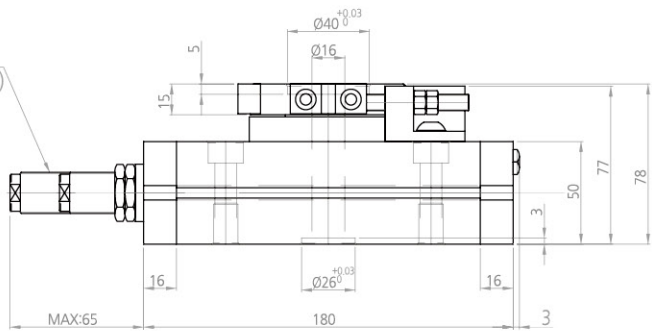
180° Type

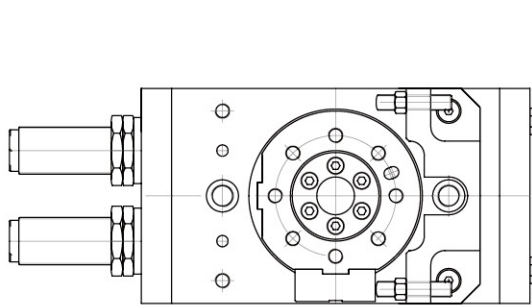


90° Type

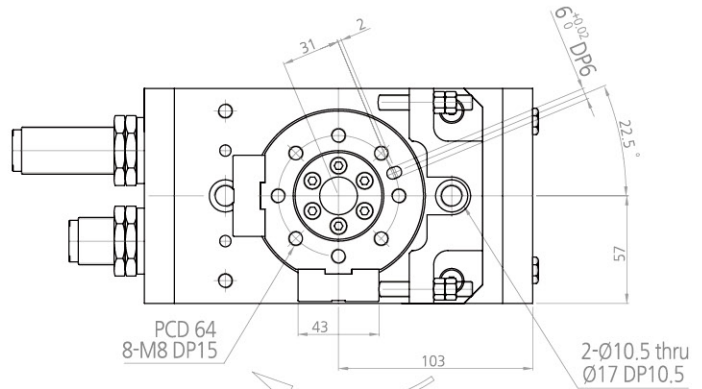


2-M20xP1.5  
(Adjust Screw)





180° Type



90° Type

